

- LEGEND**
- PROJECT BOUNDARY
 - RESERVOIR STORAGE STAGE
 - TUNNEL (WITH SHAFT)
 - SECTION LINE, ESTABLISHED
 - SECTION LINE, PROTRACTED
 - SUBDIVISION LINE, GOVERNMENT LAND SURVEY
 - SECTION CORNER, FOUND
 - SECTION CORNER, RECORD
 - 1/4 CORNER, FOUND
 - 1/4 CORNER, RECORD
 - COUNTY LINE
 - U.S. FOREST BOUNDARY
 - PROJECT BOUNDARY CORNER
 - OVERALL DIMENSION
 - RP REFERENCE POINT
 - PUBLIC LAND
 - ROAD
 - BRIDGE
 - RIVER OR PERENNIAL STREAM
 - INTERMITTENT STREAM
 - SPRING
 - POND OR LAKE, WATER LEVEL JULY 1961
 - TREES OR BRUSH
 - STREAM FLOW GAGING STATION
 - WATER SURFACE GAGING STATION
 - CAMPGROUND
 - BUILDING
 - GOVERNMENT BENCH MARK
 - BENCH MARK RELOCATION
 - PHOTOGRAMMETRIC PRINCIPAL POINT
 - PHOTOGRAMMETRIC ELEVATION
 - MINERAL RIGHTS ONLY
 - RECORD PER 2 ROS 78

EXHIBIT 'G' PROJECT 2079

MIDDLE FORK AMERICAN RIVER PROJECT

FRENCH MEADOWS RESERVOIR PROJECT AREA

A PORTION OF SECTIONS 21, 22 & 28, T.15 N., R.14 E., M.D.M.

PLACER COUNTY, CALIFORNIA

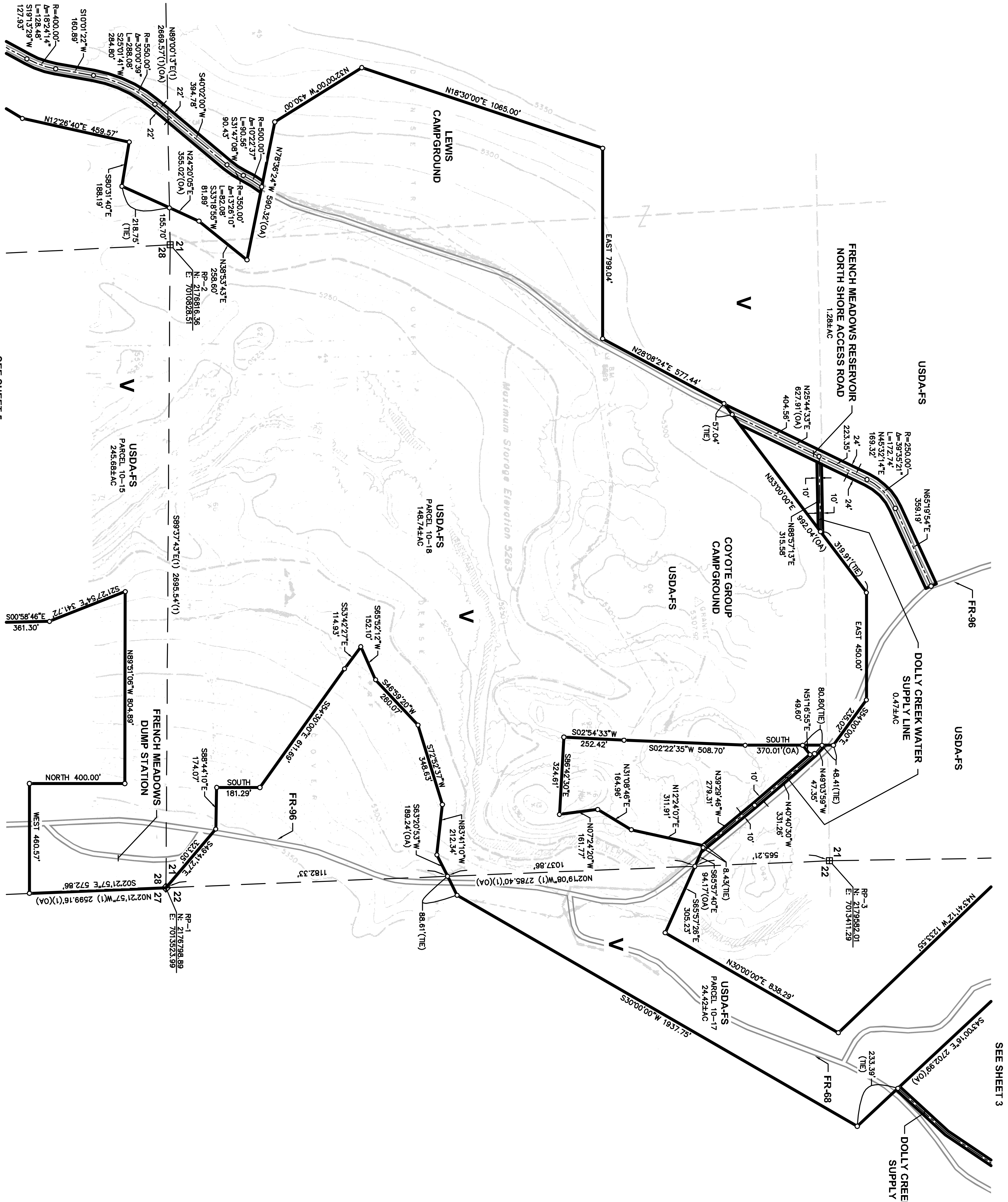
SCALE: 1"=200' FEBRUARY 11, 2011

ANDREGG

ENGINEERS

50 100 200 400 600

SHEET 4 OF 33



SEE SHEET 5

SEE SHEET 3

SURVEYORS STATEMENT

I CERTIFY THAT I SUPERVISED THE SURVEY OF THE PROJECT LANDS, THAT THE PROJECT BOUNDARY DELINEATION FOR THE MIDDLE FORK AMERICAN RIVER PROJECT AS SHOWN ON THIS EXHIBIT "G" IS DEVELOPED WITHIN REASONABLE ACCURACIES AS REQUIRED IN 18CFR4.39 & 18CFR4.41 TO THE GEOGRAPHIC LOCATION. THIS EXHIBIT IS BASED UPON MAPS OF THE EXHIBIT "K", SHEET 2 OF THE MIDDLE FORK AMERICAN RIVER PROJECT NO.2079 AND BOOK 2 SURVEY'S NO.2079-28 RECORDS OF PLACER COUNTY DEPARTMENT OF PUBLIC WORKS, SHOW HEREIN, SEE CONTROL SCHEME FOR DETAILS OF THE BOUNDARY DELINEATION AND DATA ACQUISITION.

ANDREGG GEOMATICS

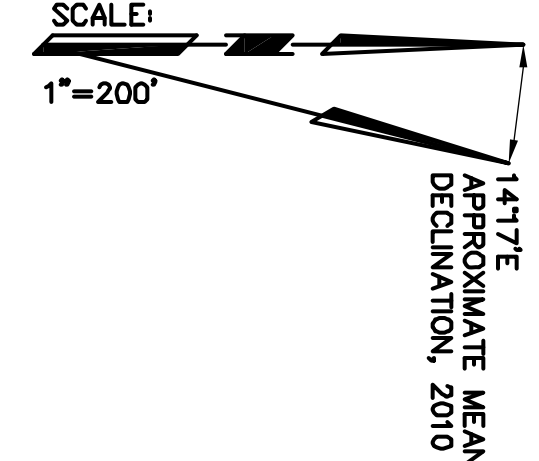
NOTES

SHADED TOPOGRAPHY SHOWN HEREON PER EXHIBIT "K", SHEET 2, MIDDLE FORK AMERICAN RIVER PROJECT; FRENCH MEADOWS RESERVOIR PROJECT AREA REVISED OCT. 20, 1977

ALL FACILITIES AND FEATURES SHOWN HERE ON ARE PER DATA COLLECTED BY OTHERS.

REFERENCE POINT COORDINATES

NAD83 CALIFORNIA STATE PLANE COORDINATE SYSTEM ZONE II (CSS83, ZONE 2); U.S. SURVEY FEET



DENNIS G. MEYER, LS 4751
LICENSE EXPIRES: 9/30/11